

**Catalogue
2011**



Product List

Contents

Transfers

Heat Seal Tape

Patches

Badges

Eurotrans

Tags & Ribbons

Thermal Tape

Printing Systems

Machinery

Thermopress

Information



Transfers

Heat sealed linen marking transfers
 An inexpensive permanent way of security
 marking linen for.....
 Hospitals, Prisons, Laundries &
 Nursing Homes

Any size from 4x4mm up to 200x150mm
 Choose from our popular standard colours, or we can
 PMS match your special colours.
 Your design can also be produced as a Heavy Weight
 towelling transfer .
 Free artwork done to your design.

Cut individually for ease of use.
 Obliterator & Sealing transfers available for alterations

CHILDREN'S NHS TRUST

Waderfast



Polyester / Cotton Tape

A tape with a clear heat-seal adhesive for labelling garments, choose from 15 colours, 8 standard sizes and other widths available on request.

This can be die cut to a wide variety of popular standard sizes to be fed through the 'Quickprint' label printer, with our 'Stayfast' ribbons.
The tape can be colour coded to show different departments/rooms etc...
Your Logo/Address/Name can be screen printed in up to 3 colours
Or use our 'Stayfast' pens to write what you want.

Continuous 50 meter rolls



Die-Cut "Waste Removed" Tape

- 82x13 mm
- 82x17 mm
- 82x25 mm
- 82x32 mm
- 82x38 mm
- 82x42 mm
- 82x44 mm
- 82x64 mm
- 39x8.5 mm 2 wide
- 38x17 mm 2 wide
- 41x13 mm 2 wide
- 41x17 mm 2 wide

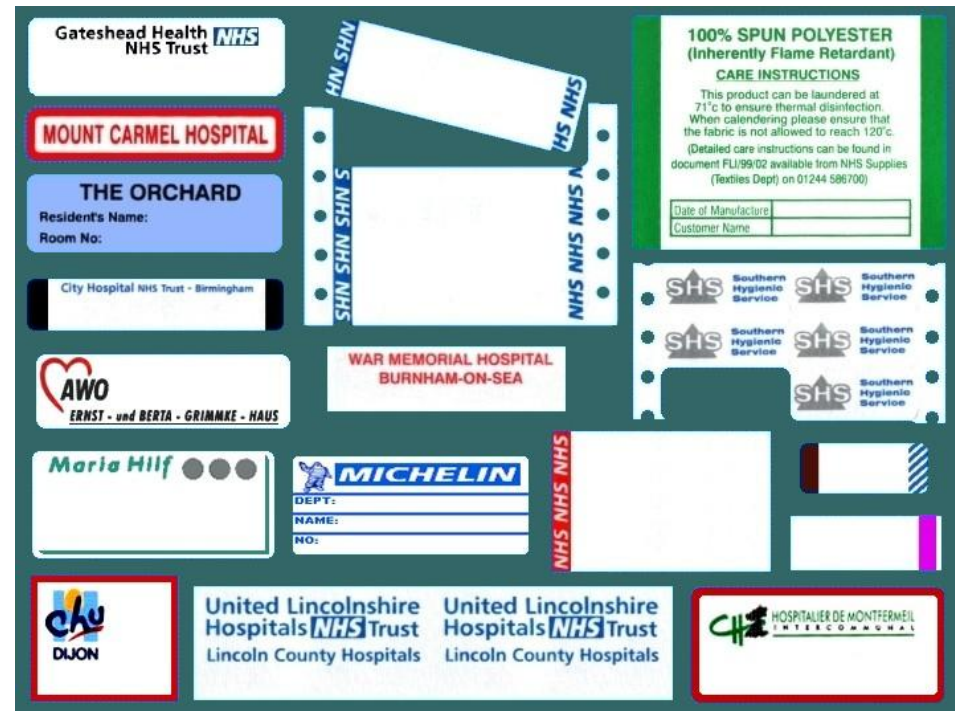


Stock Sizes

(others available upon request)

- 15 mm
- 19 mm
- 25 mm
- 38 mm
- 50 mm
- 75 mm
- 88 mm
- 100 mm

Or 100% Cotton,
Polyester M Tape,
Nylon, Poly/Cotton
with white/non
adhesive & Thermal
Tape.



Also available as pre cut Repair Patches, 22 standard sizes, other sizes available on request.

Waderfast



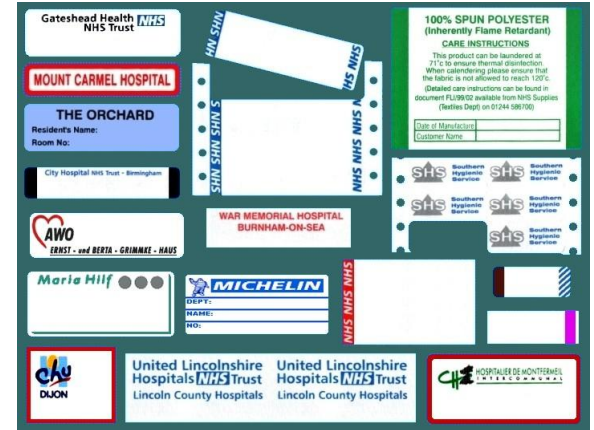
Printed Tape



Tape is silk screen printed at speed



Sensors monitor accuracy of printed tape



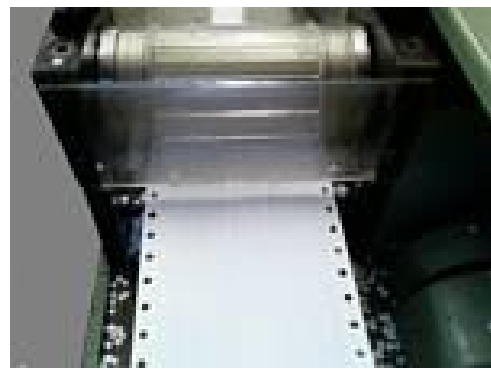
Die Cut Tape



Plain tape loaded into machine



Tractor holes punched under high pressure and waste removed.



Label size then die cut out, again under high pressure

Patches



As illustrated, there are numerous sizes, shapes and colours to choose from when it comes to patches. Whether your requirement is for the purpose of a repair or simply to colour code items you will find a patch to suit.

20 x 50 mm
20 x 70 mm
30 x 100 mm
40 x 110 mm
50 x 100 mm

17 mm Ø
20 mm Ø
25 mm Ø
35 mm Ø
50 mm Ø

15 x 15 mm
20 x 20 mm
25 x 25 mm
30 x 30 mm
35 x 35 mm
40 x 40 mm
50 x 50 mm

Specifications

They are easy to apply. Simply follow the instructions on the packet label
5-8 seconds @ 205°C.

WADERFAST COLOURS

Colours for marking & identification



Colours for patching



Other colours available with minimum quantity

Badges



Workwear Badges

- 100% Polyester
- Name/Status badges for Workwear
- 30 standard sizes from 50x20mm up to 200x100mm
- Or your own shape/size
- Up to 3 colours per design
- Choose from 12 standard colours or we can PMS match your special colours.

EUROBADGE



Eurotrans



Eurotrans

A high quality heat sealed transfer badge for Corporate, Leisure and Workwear

Any size from 3x2cm up to 24x22cm

Your design can include up to 4 colours

Colours are PMS matched to ensure exact replication of your design

Eurotrans can be applied to a wide variety of fabrics. The dwell time and temperature setting will differ depending on the fabric.

Specifications

Temperatures will range from 120°C to 200°C.
Dwell time will normally be set at 10 seconds.
Some fabrics will require pre heating.
Always refer to the instructions label.

EUROTRANS



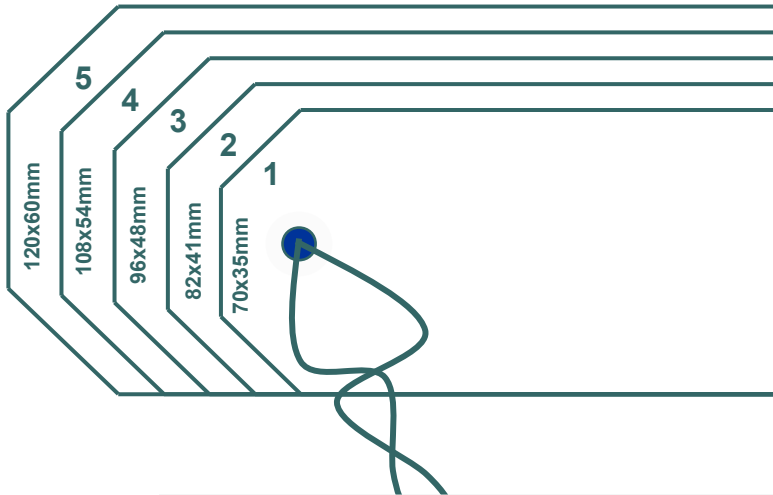
Tags & Ribbons



Tags

Tags for Identifying Laundry Bags
 Available in Buff Manila and 11 other colours
 5 popular standard sizes, others available on request
 Can be supplied with or without string
 Overprinted with your design in up to 3 colours on one or both sides

96x48 available in 14 colours



Marking pens with a fine or medium tip are also available with our Stayfast ink

Stayfast Ribbons

A specially formulated 'Stayfast' dry-clean & laundry resistant ink for a permanent bold print.
 We stock ribbons for a wide variety of printers.
 e.g. Star / Epson / Citizen etc..
 Packed individually and shrink wrapped for long shelf life.
 Stock Items – International Group NO:-
 2273, 2320, 2330, 2509, 2761, 2861, 2868, 2870, 2939



Thermalfast



Thermalfast is the latest addition to the Wader range of labelling products. It has an excellent ink retention due to its smooth surface, which also gives it a soft supple quality.

Thermalfast is used in conjunction with our thermal printing system (Laundryprint).

To compliment Thermalfast tape, we supply our own unique thermal ink ribbons.



White thermal tape with heat-seal adhesive

A white thermal tape available in continuous 50m rolls...

- 60mm wide
- 80mm wide

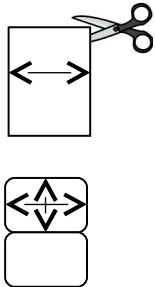
Plain continuous thermal tape

- TH - 40
- TH - 60
- TH - 80

Butterfly die cut thermal tape

- TH - 48x19
- TH - 48x20
- TH - 70x38
- TH - 82x25
- TH - 82x34
- TH - 92x50

Laundry thermal ribbon



TH - RIBBON+

- Choose from the standard label layouts, enter your text & quantity then print, it's as simple as that.
- Various sizes of **diecut** thermal tape available.
- Special layouts for your Hospital or Company can be stored in the printer (including your company logo)
- It's the most cost effective way of laundry label marking.



Standard PC Keyboard connected to the Laundryprint + provides a stand-alone printing solution by replacing bulky host computers.



Specifications

The thermal transfer label printer is ideal for applications requiring a space-saving, desktop-size. This user-friendly printer delivers optimal performance in today's on-demand laundry labelling applications. User panel with backlit LCD graphics display: 128 x 64 dots or 4 lines x 16 characters allowing easy user interface and operation

Adjustable, auto-adapt sensor for perfect registration on die-cut label types. PS2 keyboard connection for standalone applications; no PC required.

Print Method Thermal Transfer with Laundry proof ribbons.

Resolution 203 dpi (8 dots/mm)

Print Speed 6 IPS (150 mm/s)

Memory 4MB Flash (2MB for user storage)

Sensor Type Fixed, centre aligned see-through sensor, adjustable reflective sensor

Up to 100mm Thermal Heat Seal Tape

Faster label production compared to Dot –Matrix systems.

Quality Barcode printing

Can be used with a Windows PC for advanced label design.



Goldseal Plus

All "Plus" machines are programmed via computer directly to the controller thus ensuring every machine is the same. Custom parameters as denoted by the purchaser can be added to specific units.

Specifications

Reliable 500 Watt Metal Clad Heating Element
 Spring Loaded Base For Constant Even Pressure
 Powder Coated Aluminum Casting
 Powered By Standard 13amp Outlet
 P.A.T. (Portable Appliance Tested)
 12 Months Guarantee & CE Marked
 Supply Voltage :- 240Volt a/c



Designed & Manufactured In The United Kingdom



Options

5¼ x 3¾ Std Size	120x90	£P.O.A
6 x 4	150x100	£ P.O.A
8 x 6 700 watt	200x150	£ P.O.A

Our best selling Goldseal heat press, based on the established Wader casting. Ideal for Applying Heat Seal Labels, Transfers and Badges.



One button operation to alter the temperature and timer with microprocessor PID control, dual display of platen temperature and operator set time dwell. All the necessary setting are pre-programmed to the machine before it is sent out.



Microseal Plus

All "Plus" machines are programmed via computer directly to the controller thus ensuring every machine is the same. Custom parameters as denoted by the purchaser can be added to specific units.

Model	Power	Temperature	Time	Material	Notes
MS-100	500W	210°C	8.0s	Aluminum	Standard
MS-200	500W	210°C	8.0s	Aluminum	Standard
MS-300	500W	210°C	8.0s	Aluminum	Standard
MS-400	500W	210°C	8.0s	Aluminum	Standard
MS-500	500W	210°C	8.0s	Aluminum	Standard
MS-600	500W	210°C	8.0s	Aluminum	Standard
MS-700	500W	210°C	8.0s	Aluminum	Standard
MS-800	500W	210°C	8.0s	Aluminum	Standard
MS-900	500W	210°C	8.0s	Aluminum	Standard
MS-1000	500W	210°C	8.0s	Aluminum	Standard
MS-1100	500W	210°C	8.0s	Aluminum	Standard
MS-1200	500W	210°C	8.0s	Aluminum	Standard
MS-1300	500W	210°C	8.0s	Aluminum	Standard
MS-1400	500W	210°C	8.0s	Aluminum	Standard
MS-1500	500W	210°C	8.0s	Aluminum	Standard
MS-1600	500W	210°C	8.0s	Aluminum	Standard
MS-1700	500W	210°C	8.0s	Aluminum	Standard
MS-1800	500W	210°C	8.0s	Aluminum	Standard
MS-1900	500W	210°C	8.0s	Aluminum	Standard
MS-2000	500W	210°C	8.0s	Aluminum	Standard

Specifications

Reliable 500 Watt Metal Clad Heating Element
 120mm X 90mm Silicone Pad Fusing Area
 Spring Loaded Base For Constant Even Pressure
 Powder Coated Fabrication
 Powered By Standard 13amp Outlet (IEC)
 P.A.T. (Portable Appliance Tested)
 12 Months Guarantee & CE Marked
 Supply Voltage :- 240Volt a/c



Designed &
 Manufactured In The
 United Kingdom



A robust fabricated heat sealer incorporating the Goldseal electronics
 Ideal for Applying Heat Seal Labels, Transfers and Badges.
 Available Platen Sizes
 5¼ x 3¾" (standard size)



One button operation to alter the temperature and timer with microprocessor PID control, dual display of platen temperature and operator set time dwell.
 All the necessary setting are pre-programmed to the machine before it is sent out.



Thermopress



THERMOPRESS

HP4

Heated Irons in Top and Bottom with cast in elements assuring fast heat recovery and evenly dispersed temperature throughout area.

Foot Pedal operation permits use of both hands to hold work.

Pressure fully adjustable to maximum of 100 PSI.

Timer- 0-45 Seconds, Solid State adjustable.

Large, visible work area for quick and accurate lay-up.

Silicone Sponge Pad permits uneven work pieces.

Pedestal Mount saves valuable work bench area.

Thermostats easily adjustable for desired temperature.

Safety Guard around work area automatically interrupts machine cycle upon contact with foreign object, leaving the machine inoperable until manually reset.

Emergency Switch opens machine immediately, and must be reset before unit can be cycled again.



HP8

Articulating Iron provides even pressure over complete work area
Silicone Sponge Pad permits uneven work pieces
Pressure fully adjustable to maximum of 100 PSI
Timer- 0-45 Seconds, Solid State adjustable
Accessible, easily adjustable thermostat for convenient temperature settings



HP7

Fully adjustable pressure to a maximum of 100 PSI.
Timer- 0-45 Seconds (longer time dwell available for Mat repair),
Solid State, adjustable.

Conveniently located adjustable thermostat to set desired temperature. Cast tubular heating elements distribute heat evenly and quickly.
Iron rotates to match work area without moving work
Rolling head allows clear work area for fast, accurate work lay-up. Pilot light indicate power, air on, iron to operating temperature. Dual operating switches require operator to activate switches simultaneously to cycle machine
Anti Tie-down System eliminates single handed operation
Emergency Release Switch immediately stops machine operation, until manually reset
Limit Control Thermostat does no allow operation of machine until iron temperature reaches 375° F

Machinery



All of Wader's machines are built in house at our factory in Hoylake.
All parts are machined in house apart from the Goldseal Casting which is CNC machined at the foundry.

Wader engineering can repair / recondition you existing machine using only OEM spare parts.

Each machine is then carefully inspected and Portable Appliance Tested (if applicable) before it leaves the workshop.

A calibration certificate can also be supplied at the customers request.

All our test / calibration equipment hold a current ISO certificate and are annually checked by the manufacturer.

Full Repair quotations given on request.
Collection & Delivery Service.



Machine manuals and wiring diagrams are available for download (PDF) from the Wader web site including.

- Goldseal Plus
- Microseal Plus
- Goldseal Std
- Microseal Std
- Transeal
- Wader MK 3
- Swift

[Click Here](#)

From the aluminium heat plates, pre-fabricated mild steel machined housings (Microseal), wiring looms to printed circuit boards everything is made in house to exacting specifications ensuring that there are no alteration in production quality and that spare parts are readily available.



wader_eng@yahoo.co.uk

[Contents](#)



Our product range has been built up over many years of experience in supplying the NHS and commercial laundries.
Whatever your needs, we believe we can offer a quality product, together with first class service.

Ordering any product from Wader is a simple process.
You can telephone your requirements, or send an order via facsimile.
Alternatively, you can e-mail your order.
We require an **order number** from you whichever method you choose.
If you require printed goods we will, if it is a new design, fax or e-mail an artwork- proof before we proceed

Information

P.M.S

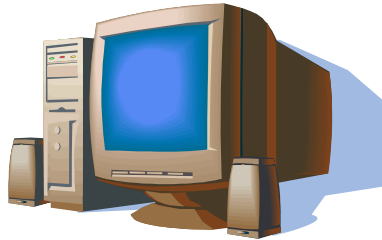
Pantone™ Matching System
Industry standard colour system

Stayfast

Specially formulated
wash resistant ink



info@wader.co.uk



www.wader.co.uk

Orders by post or any other correspondence to...

©2010 Wader Labelling Systems Limited

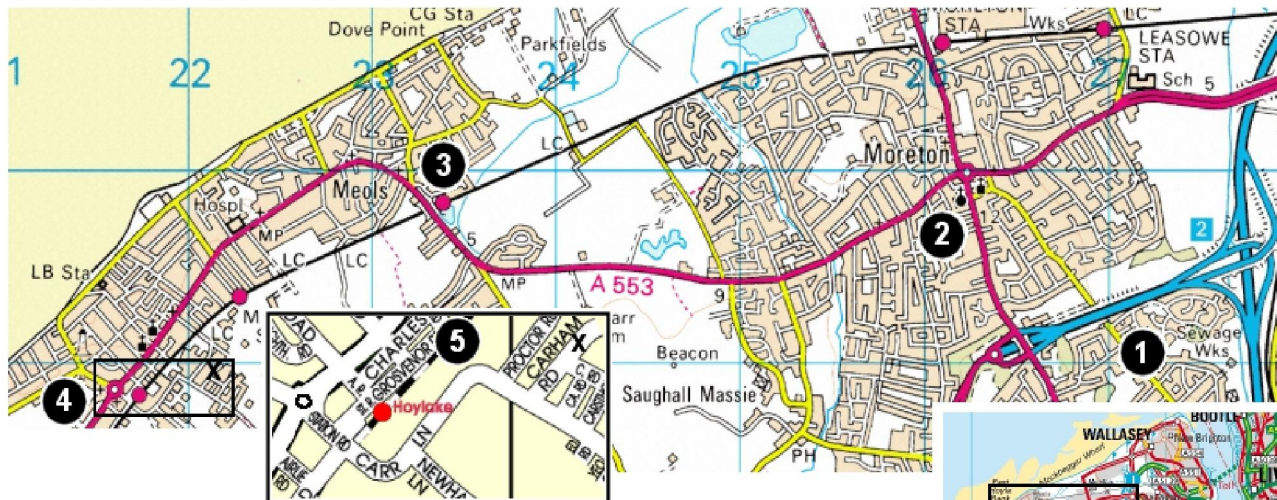
Prices may fluctuate. Correct at time of print.
Wader does not assume responsibility for misuse of this software.
All logos and trademarks are property of the respective owners



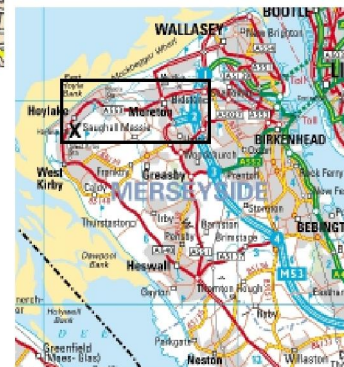
Sales Dept,
Wader Labelling Systems Limited
26 Carham Road, Hoylake
Wirral, Merseyside CH47 4FF.

Contents

Location



- ① M53 turn off at junction 2 onto A551 towards Moreton
 - ② At roundabout take left turning onto A553
 - ③ Continue along A553 passing over Meols railway station hill
 - ④ At Hoylake roundabout take left and pass over level crossing
 - ⑤ Follow Carr Lane past Scottish Power/Manweb and Carham Road is second on the left (Harmony Kitchens on corner)
- x We are a couple of hundred yards along on the left



We have seen many changes since those early days both in terms of the company and the industry.

Based in the Wirral, we manufacture our range of labelling systems, including heat presses (located at our Wirral factory), badges, transfers and printed labels all in house

The name Wader has been associated with the laundry industry since the late 1960's, with the introduction of the Wader marking machine.

Our products are supplied to a worldwide market.



Google Map